



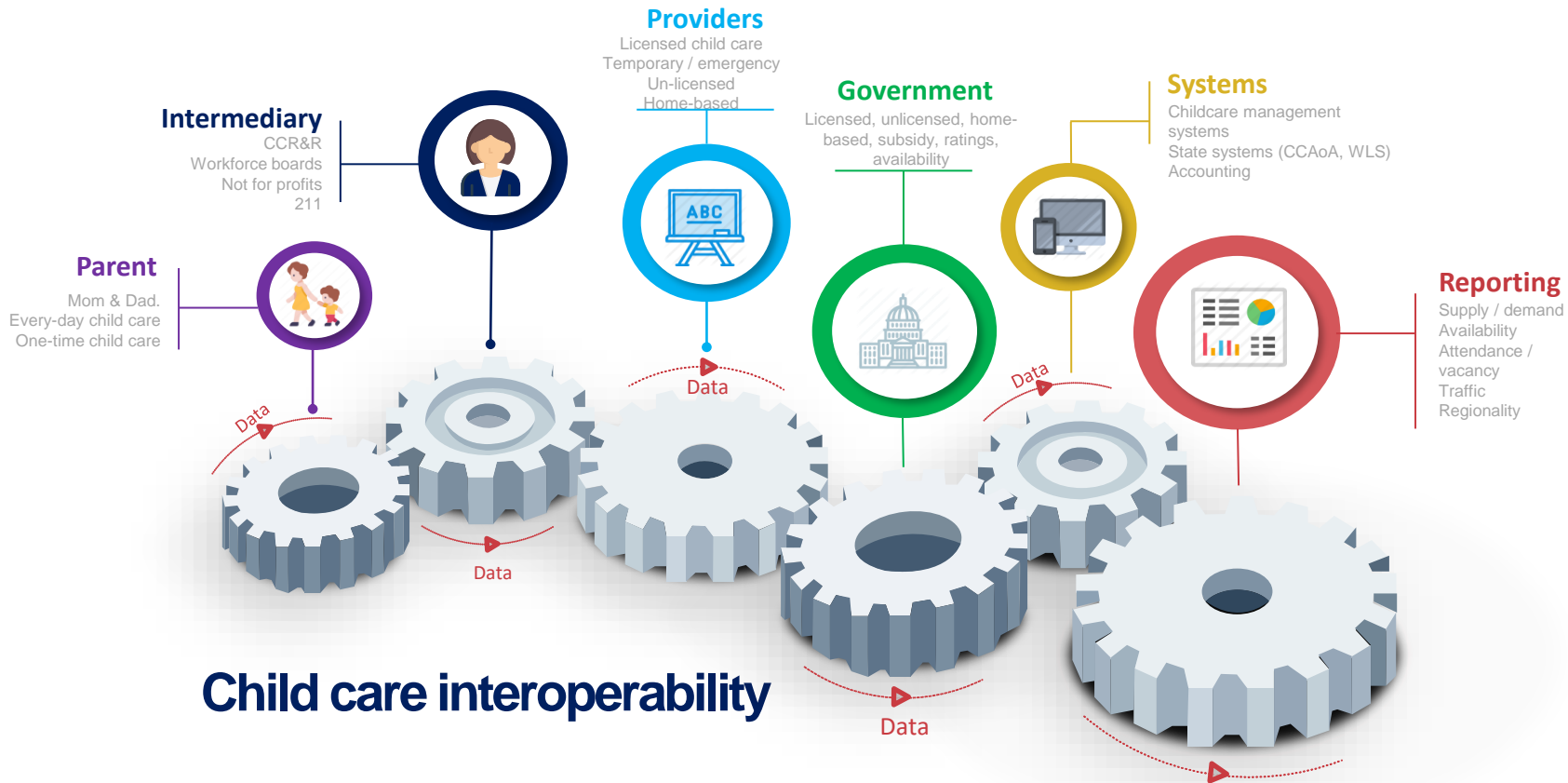
“Everything must be made as simple as possible. But not simpler.”

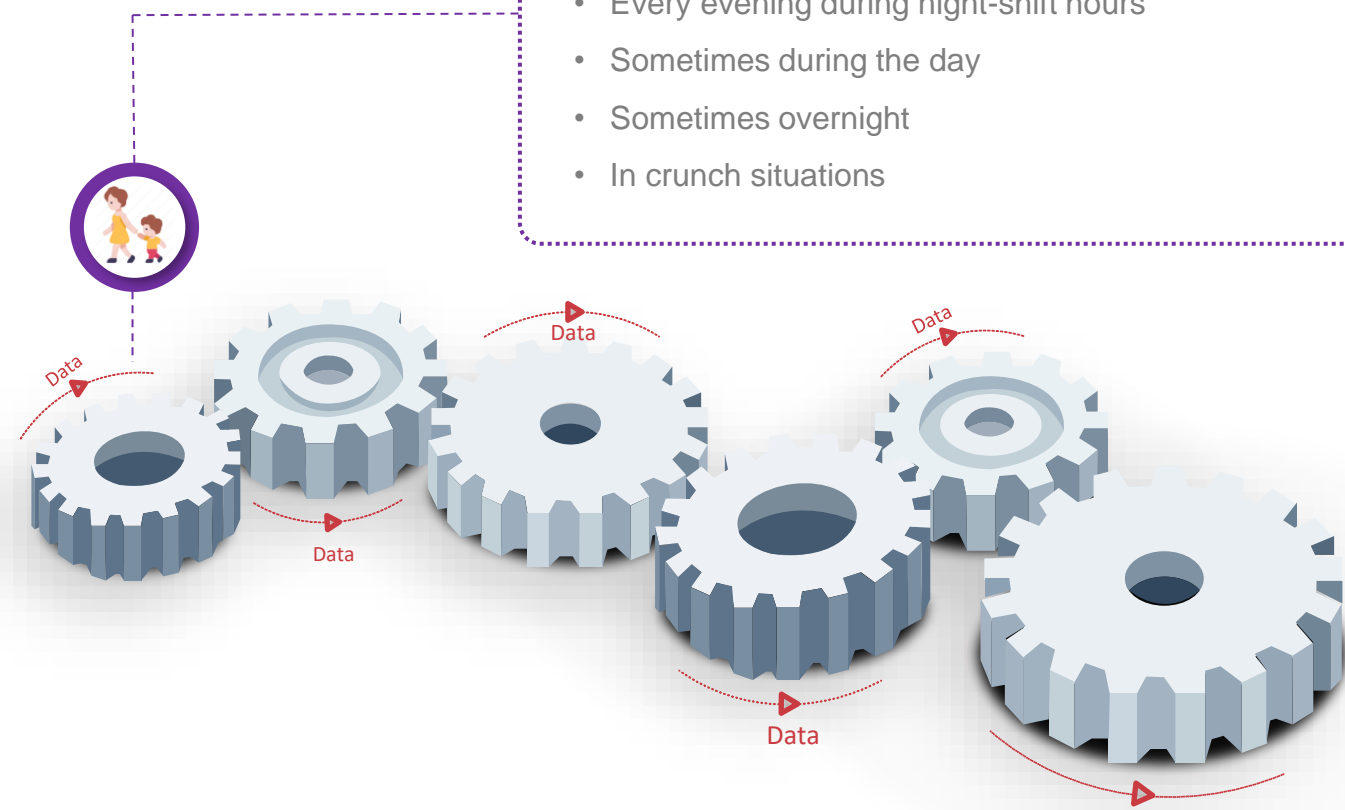
Albert Einstein



**Texas Child Care  
Availability Portal**

The logo features a blue outline of the state of Texas on the left. Inside the outline, there is a red location pin icon with a white circle at its top containing a simple white baby face with two dots for eyes and a curved line for a smile. To the right of the Texas map, the words 'Texas Child Care' are written in a large, bold, sans-serif font. 'Texas' is in blue, 'Child' is in red, and 'Care' is in red. Below this, the words 'Availability Portal' are written in a large, bold, blue sans-serif font.





## Parent

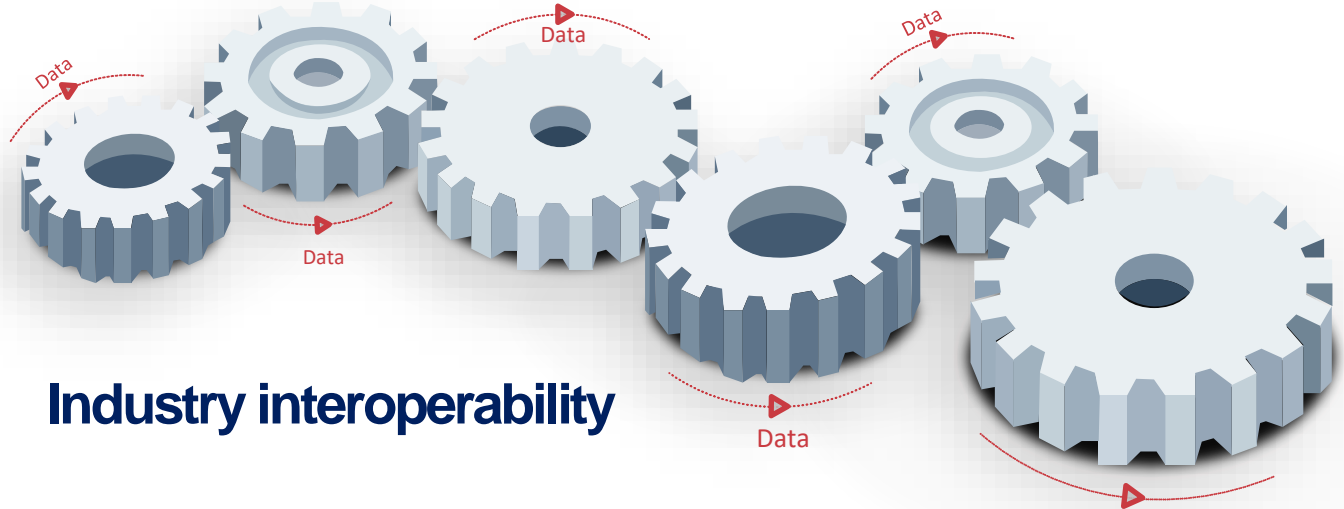
I just need help to care for my children:

- Every day during working hours
- Every evening during night-shift hours
- Sometimes during the day
- Sometimes overnight
- In crunch situations

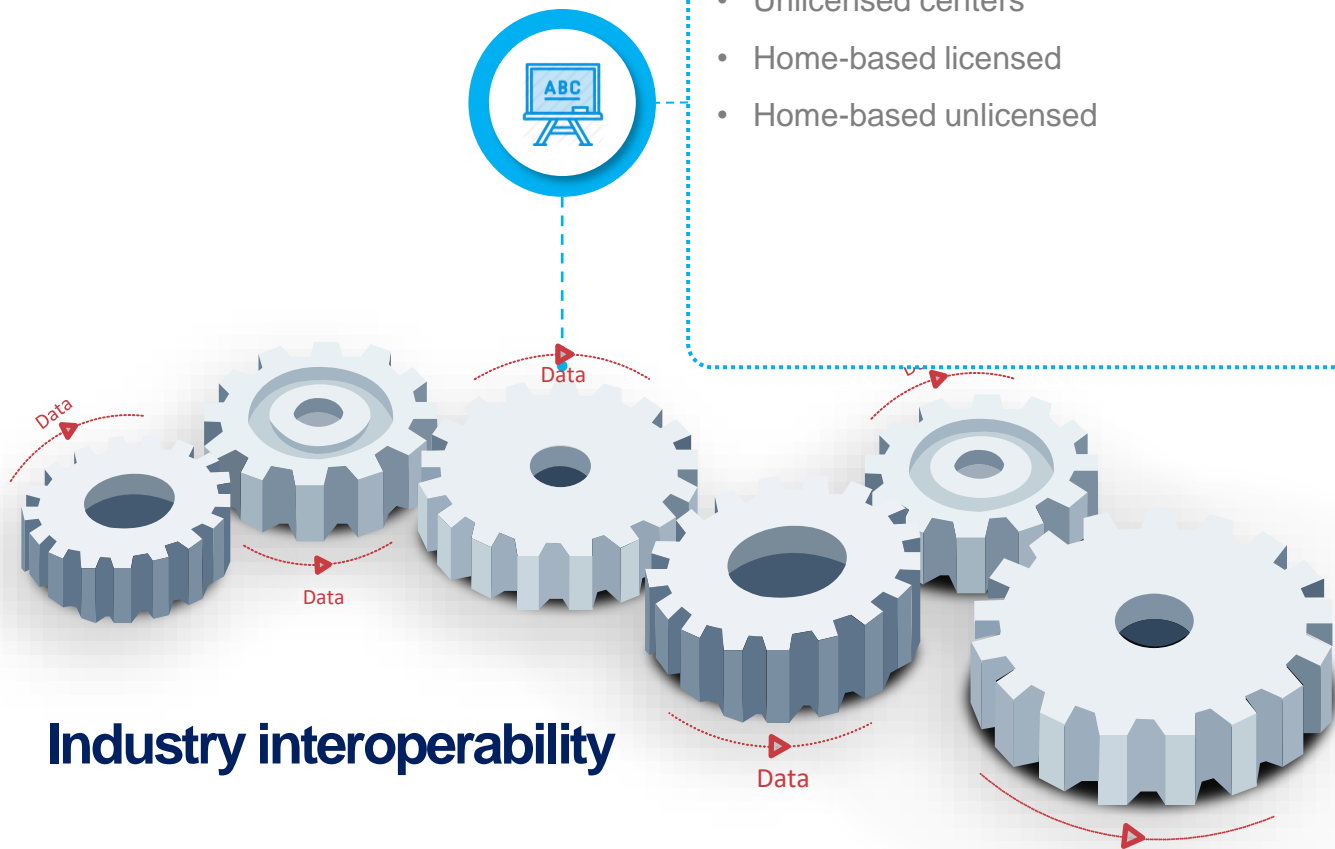


**Intermediary:**

- CCR&Rs
- 211
- Not-for-profits
- Others



**Industry interoperability**



### Provider

- Licensed centers
- Unlicensed centers
- Home-based licensed
- Home-based unlicensed

**Industry interoperability**

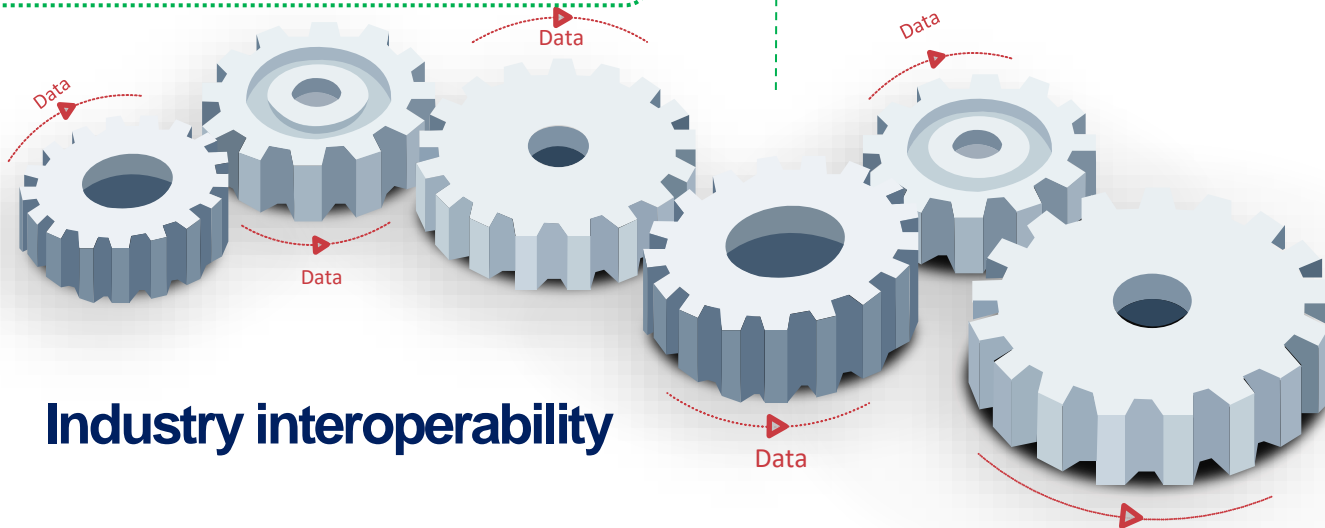
## Government

### 1. State

- Health & Human Services
- Workforce boards
- Department of Agriculture
- Department of Education

### 2. Federal

- Health & Human Services -> Administration of Children & Families



**Industry interoperability**



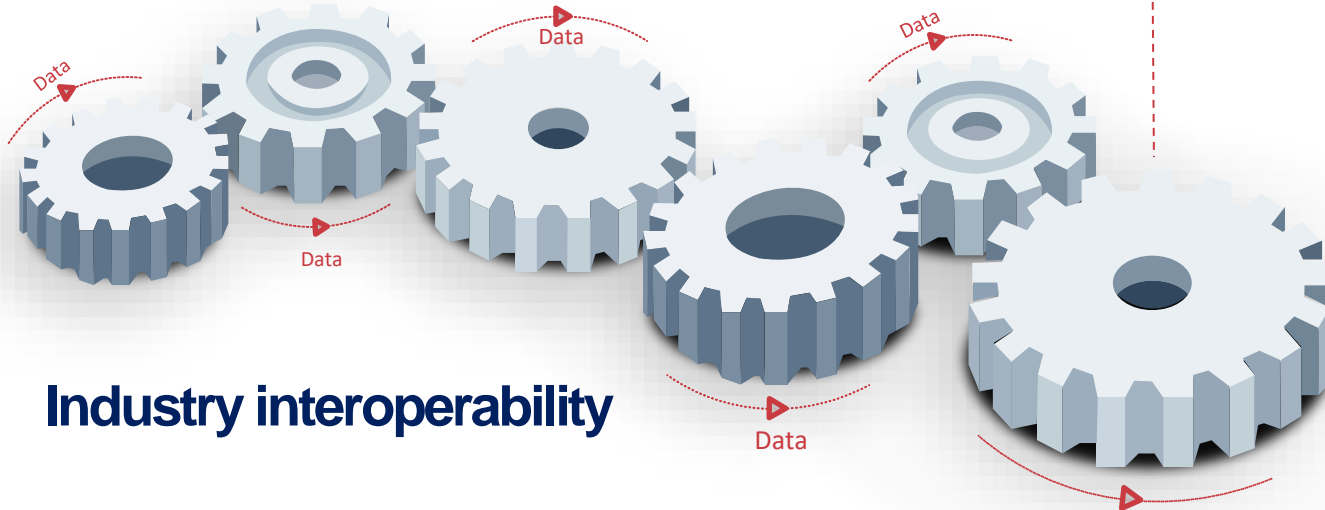
## Systems

- **Government:** HHS, Education, Agriculture, Workforce, etc.
- **Parents:** CCR&R, 'find-childcare.com sites, provider sites, etc.
- **Providers:** Child Care Management Systems such as ProCare, SmartCare, EZCare, Brightwheel, etc.



## Reporting

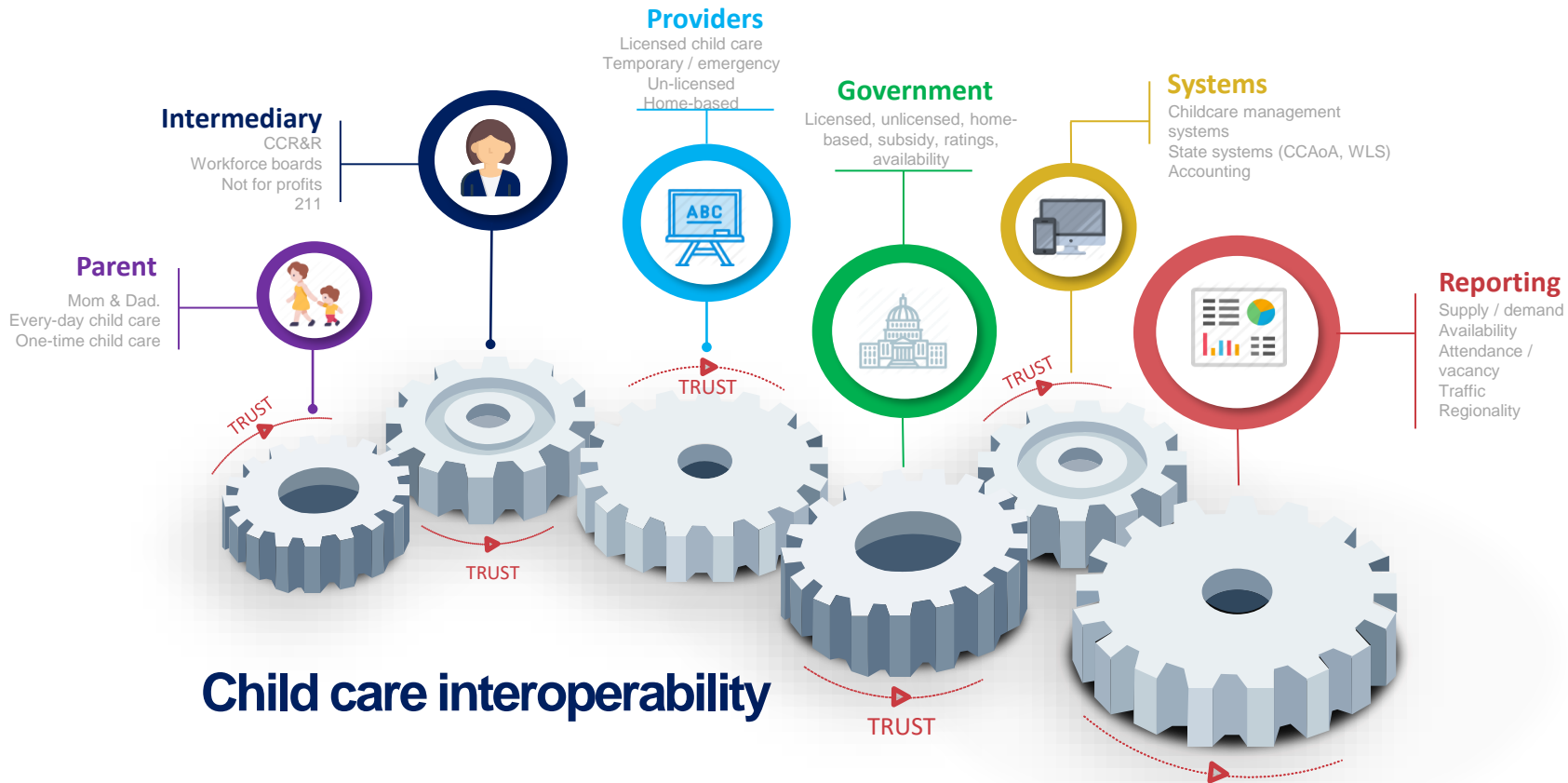
- Availability - Supply & demand
- Enrolment - Attendance / utilization
- Sustainability & profitability - revenue per child enough to cover expenses
- Full fee collection – payers, non-payers, subsidies, etc.



**Industry interoperability**







# Child Care in Texas

- ◆ Child Care Regulation (HHSC) – licensing
- ◆ Texas Workforce Commission – subsidy and QRIS
  - 28 local workforce boards
  - Local workforce boards sometimes have contractors that work with the providers and do quality support

# Availability Portal

- ◆ Live on April 1 in response to COVID-19 crisis
- ◆ An effort of the Governor’s Frontline Child Care Task Force
- ◆ Transitioned from “Frontline” in September
- ◆ URL: <https://find.frontlinechildcare.texas.gov/>





ADMINISTRATION FOR  
**CHILDREN & FAMILIES**



# Virtual Tribal, State, and Territory Administrators Meeting 2020

## Brighton Center

14207 Higgins Rd, SAN ANTONIO, 78217

[Visit Website](#)

[Call 2108264492](tel:2108264492)

### Licenses & accreditation

Texas Rising Star: ★★★★★ (4 out of 4)

License # 832593

[View certificates and inspection reports](#)

### Availability

✔ Spots available for toddler

Capacity: 170

### Ages served

Infant

Toddler

Preschool

School age

### Financial programs

✔ This child care provider accepts financial aid

### Hours of operation

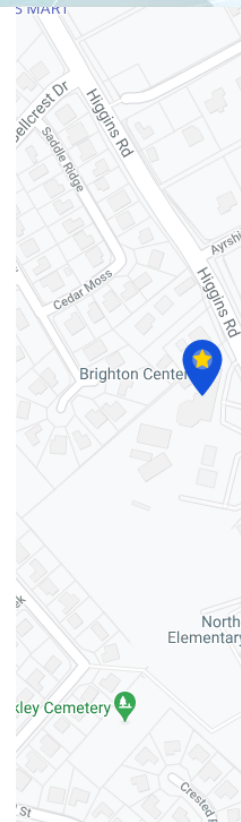
Monday - Friday: 7:00 AM - 5:00 PM

### Contact information

2108264492

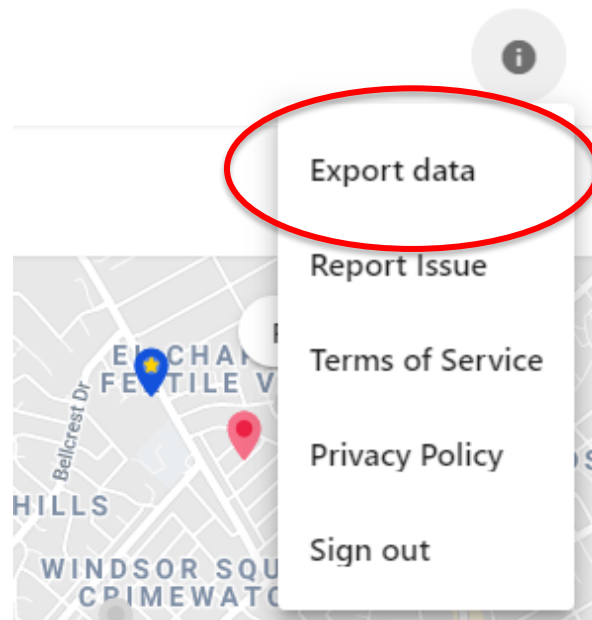
[hr@brightonsa.org](mailto:hr@brightonsa.org)

<http://www.brightonsa.org>



# Public's Access

- ◆ Statewide data
- ◆ CSV file
- ◆ All availability by age for each child care program
- ◆ With county and other info helpful to conducting local analyses



# Provider Availability and Attendance

## Step 1

**Texas Child Care Availability Portal**

Email associated with your Child Care Licensing Online Account

Enter email

Full License Number (Include dashes and spaces if applicable)

Enter License Number

**Submit**

If you are unable to login, please email us at **MSC@hpsc.state.tx.us**

## Step 2

To update your availability, first select the center and the date you wish to update. Then click the "Update Availability" button.

To update your profile, first select the center and click the "Update Profile" button.

Select Center

04/07/2020

**Update Availability**

**Update Profile**

# Provider Availability and Attendance

## Step 3

If your data has not changed since the last time you updated, please click the "Submit" button to confirm your data.

Infant (0 to 17 months old)

Toddler (18 months old to 3 years old)

Preschool (3 years old to 5 years old)

School Age (5 years old to 13 years old)

**When looking at your attendance for last week, what was the average number of children that attended each day?** For example, if you had between 50 and 60 kids attend your program each day, you would answer 55.

Submit

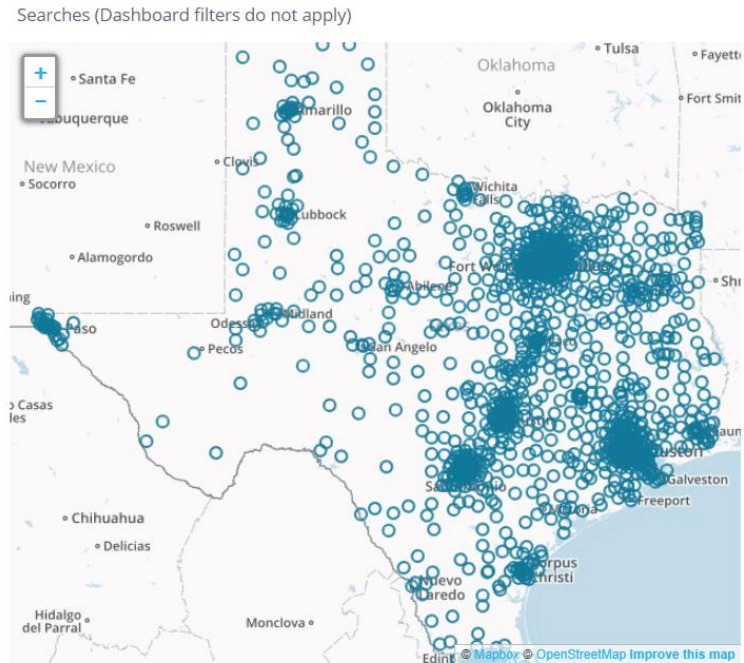
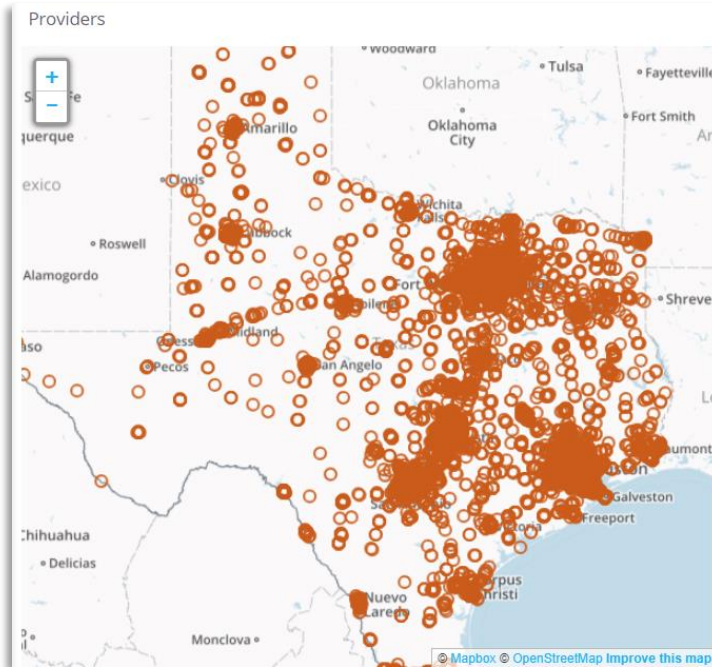
Back

# Dashboard





# Supply and Demand



# Data Used for the Portal

- ◆ Public child care licensing data (operation ID, address, hours of operation, age groups served)
- ◆ Availability and attendance from providers
- ◆ QRIS and subsidy status from TWC

# Where to Start

1. Figure out who is your audience and what do you want to tell them
2. Determine where this information already exists
3. Begin conversations with other agencies
4. See where everyone might agree and use it as a starting point



# Presenters

## **Shay Everitt**

Senior Advisor for Child

Texas Workforce Commission

T: 512.516.1410

E: [shay.everitt@twc.state.tx.us](mailto:shay.everitt@twc.state.tx.us)

## **Brian Shultz**

President

Bowtie

T: 214.263.7000

E: [brian@bowtieBI.com](mailto:brian@bowtieBI.com)